

FOR LEASE

APPROX. 8,000 SF REMODELED
RETAIL BUILDING AT THE SANTA MONICA PIER

1605 Ocean Front Walk, Santa Monica, CA 90401



LANCELOT
Commercial Industrial Brokerage



Space Available : +/-8,000 SF
Rental Rate : \$5.63 psf NNN
Parking : Adjacent City Lot

PROPERTY HIGHLIGHTS

- Recently Remodeled Building
- Dense Pedestrian Foot Traffic On Ocean Front Walk With +/- 250,000 Daily Visitors and +/-8 Million Annually
- Situated at the Santa Monica Pier – An Internationally Renowned Tourist Destination
- Immediately adjacent to Pacific Park (Santa Monica Pier Amusement Park), Including the Iconic Farris Wheel, Carnival Rides + Arcade

*Square Footage Approximate –
Tenant to Independently Verify

LANCE LEVIN, PRESIDENT

Lance@LancelotCommercial.com
DRE#01128388
Off: 310.839.3333 ext 220
Fax: 310.839.3382



LANCELOT
Commercial Industrial Brokerage

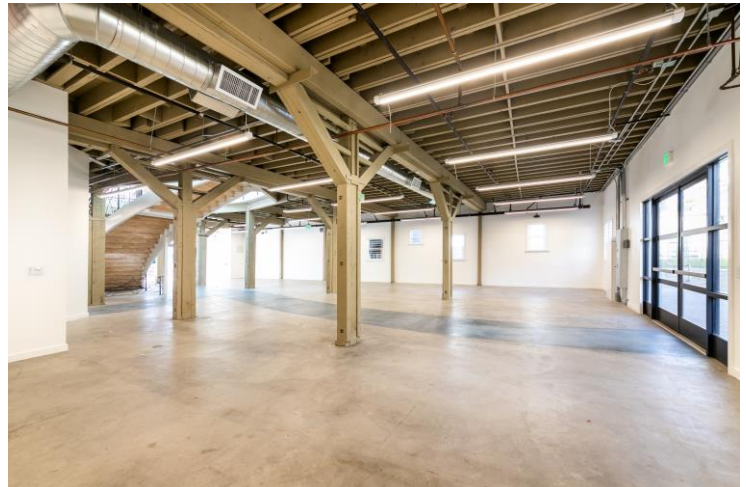
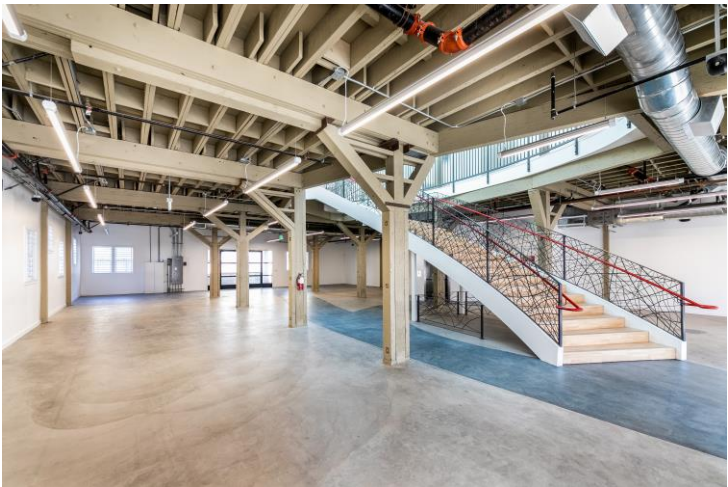
FOR LEASE

APPROX. 8,000 SF REMOLDED
RETAIL BUILDING AT THE SANTA MONICA PIER

1605 Ocean Front Walk, Santa Monica, CA 90401



310.839.3333



LANCELOT

Commercial Industrial Brokerage

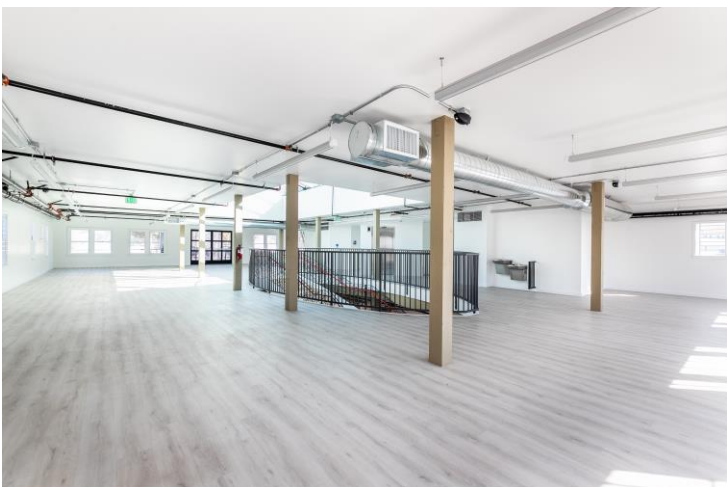
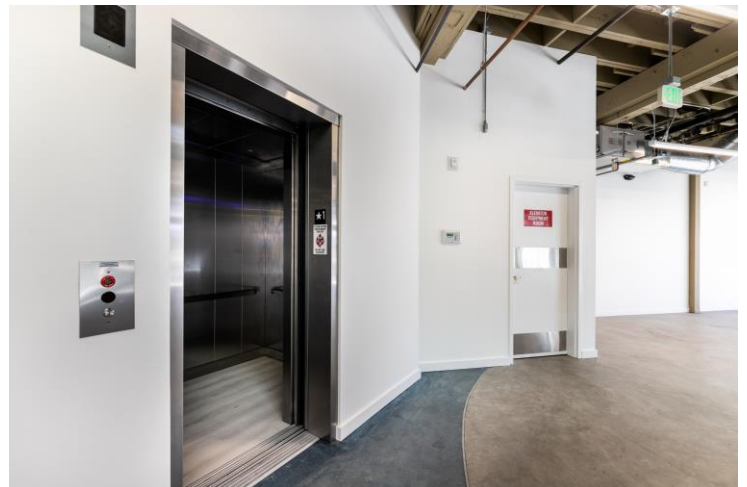
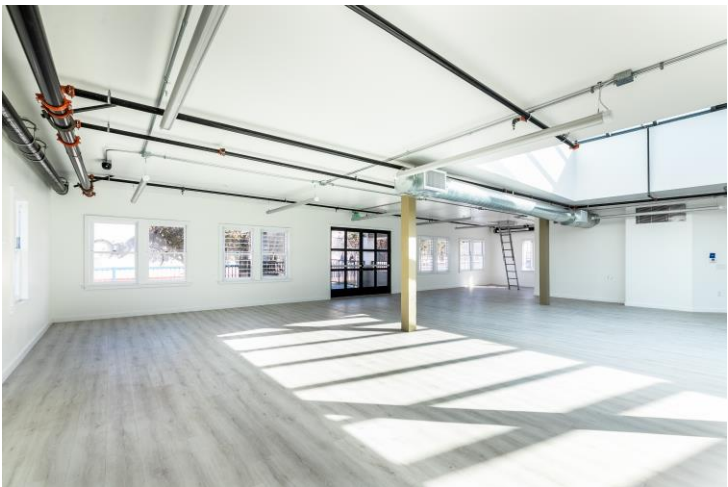
FOR LEASE

APPROX. 8,000 SF REMOLDED
RETAIL BUILDING AT THE SANTA MONICA PIER

1605 Ocean Front Walk, Santa Monica, CA 90401



310.839.3333



LANCELOT
Commercial Industrial Brokerage

FOR LEASE

APPROX. 8,000 SF REMOLDED
RETAIL BUILDING AT THE SANTA MONICA PIER

1605 Ocean Front Walk, Santa Monica, CA 90401



310.839.3333



LANCELOT
Commercial Industrial Brokerage

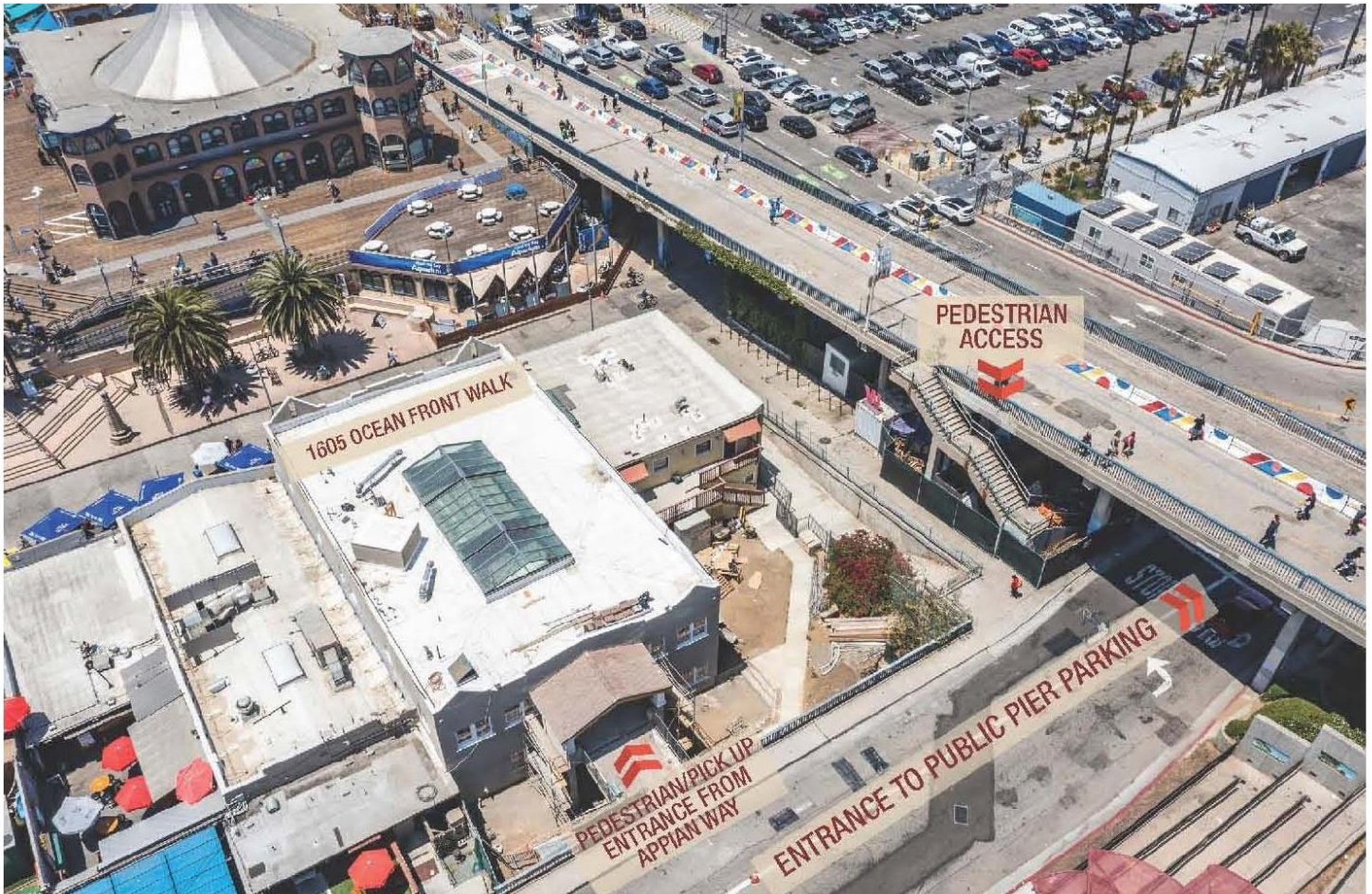
FOR LEASE

APPROX. 8,000 SF REMOLDED
RETAIL BUILDING AT THE SANTA MONICA PIER

1605 Ocean Front Walk, Santa Monica, CA 90401



310.839.3333



LANCELOT
Commercial Industrial Brokerage

FOR LEASE

APPROX. 8,000 SF REMOLDED
RETAIL BUILDING AT THE SANTA MONICA PIER

1605 Ocean Front Walk, Santa Monica, CA 90401



310.839.3333

ALMOST
UNLIMITED
PIER PARKING



LANCELOT
Commercial Industrial Brokerage

FOR LEASE

APPROX. 8,000 SF REMOLDED
RETAIL BUILDING AT THE SANTA MONICA PIER

1605 Ocean Front Walk, Santa Monica, CA 90401



310.839.3333



LANCELOT
Commercial Industrial Brokerage

FOR LEASE

APPROX. 8,000 SF REMODELED
RETAIL BUILDING AT THE SANTA MONICA PIER

1605 Ocean Front Walk, Santa Monica, CA 90401



310.839.3333



+/-8 MILLION
ANNUAL VISITORS

LOCATION HIGHLIGHTS

- Nearly Unlimited Parking in Adjacent Public Pier Lot
- Close to Aquarium of The Pacific and Pacific Park (Santa Monica Pier Amusement Park)
- Situated Along Bustling Ocean Front Walk, Just Below Ocean Ave, Home famed restaurants and 5-Star Hotels, Including The Lobster, Ivy by the Shore, Lowes, Casa Del Mar + Shutters
- 3 Blocks From the Third Street Promenade, Hosting a Retinue of A+ Retailers, Famed Eateries + Trendy Cafes
- Freeway Close With Convenient Access to the 10 Freeway and Pacific Coast Hwy



LANCELOT

Commercial Industrial Brokerage