

FOR LEASE

APPROX. 210-329 SF OFFICE SPACE

1539 Sawtelle Boulevard, Los Angeles, CA 90025



LANCELOT
Commercial Industrial Brokerage



Space Available : +/-210-329 SF
Rental Rate : \$700 - \$800 Per Month
Parking : Gated Onsite Lot

PROPERTY HIGHLIGHTS

- Three Suites Available in 2-Story Office Building
- Available Separately, Or Can Be Combined
- Suite 18A – 329 SF \$800 Per Month (160 SF Usable)
- Suite 18B – 267 SF \$750 Per Month (130 SF Usable)
- Suite 18C – 210 SF \$700 Per Month (102 SF Usable)
- Reception Area Available For An Additional \$250 Per Month
- Potential For Conference Room or Executive Office
- Suites With Central Air Conditioning + Building With Elevator
- Gated Ground Level Parking

*Square Footage Approximate –
Tenant to Independently Verify

LANCE LEVIN, PRESIDENT

Lance@LancelotCommercial.com
DRE#01128388
Off: 310.839.3333 ext 220
Fax: 310.839.3382



LANCELOT
Commercial Industrial Brokerage

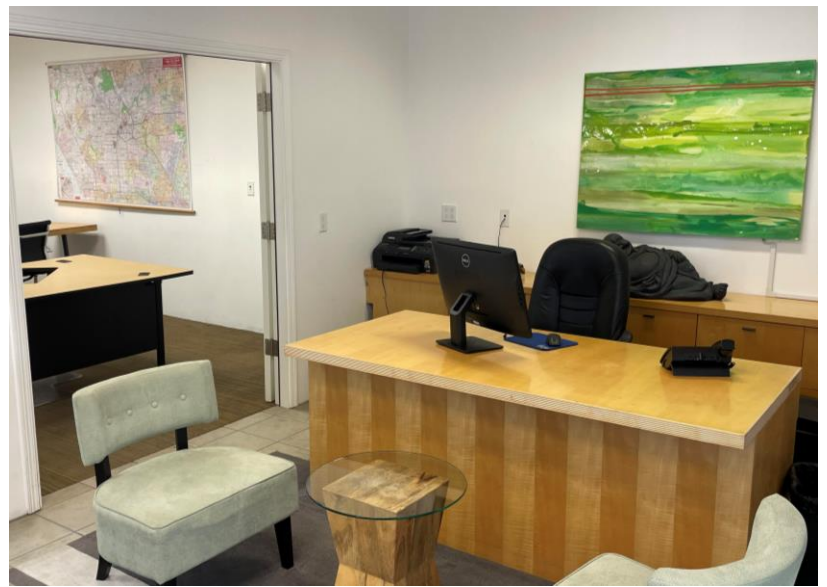
FOR LEASE

APPROX. 210-329 SF OFFICE SPACE

1539 Sawtelle Boulevard, Los Angeles, CA 90025



310.839.3333



LANCELOT
Commercial Industrial Brokerage

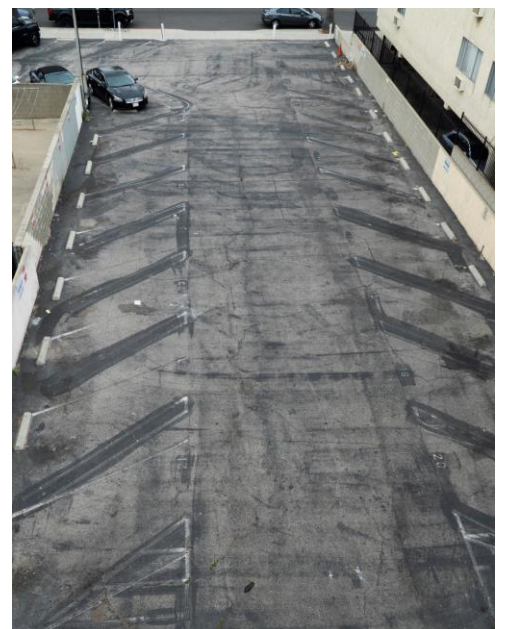
FOR LEASE

APPROX. 210-329 SF OFFICE SPACE

1539 Sawtelle Boulevard, Los Angeles, CA 90025



310.839.3333



LANCELOT
Commercial Industrial Brokerage

1539 SAWTELLE BOULEVARD, SUITE 18 | LOS ANGELES, CA 90025

FOR LEASE

APPROX. 210-329 SF OFFICE SPACE

1539 Sawtelle Boulevard, Los Angeles, CA 90025

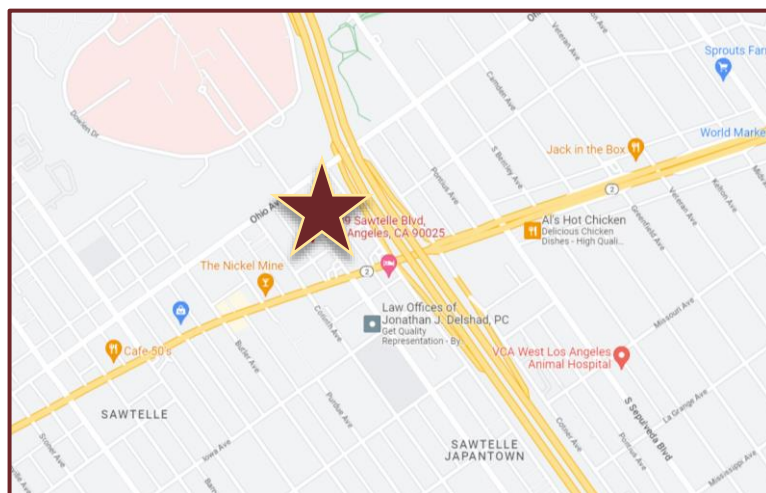


310.839.3333



LOCATION HIGHLIGHTS

- 1-Block From The 405 Freeway at Santa Monica Blvd
- Short drive to Brentwood, Bel Air and Santa Monica
- Within Walking Distance to Several Popular Restaurants in Little Osaka (Japan Town) including Plan Check, Hayama, Tempera House, Blackbeard's Crafts & More
- Close to Equinox Athletic Club and City of Los Angeles Building & Safety Offices



LANCELOT
Commercial Industrial Brokerage