

# FOR LEASE

**APPROX. 8,000 SF REMODELED  
RETAIL BUILDING AT THE SANTA MONICA PIER**

1605 Ocean Front Walk, Santa Monica, CA 90401



**LANCELOT**  
Commercial Industrial Brokerage



Space Available : +/-8,000 SF  
Rental Rate : \$5.63 psf NNN  
Parking : Adjacent City Lot

## PROPERTY HIGHLIGHTS

- Recently Remodeled Building
- Dense Pedestrian Foot Traffic On Ocean Front Walk With +/- 250,000 Daily Visitors and +/-8 Million Annually
- Situated at the Santa Monica Pier – An Internationally Renowned Tourist Destination
- Immediately adjacent to Pacific Park (Santa Monica Pier Amusement Park), Including the Iconic Ferris Wheel, Carnival Rides + Arcade

*\*Square Footage Approximate –  
Tenant to Independently Verify*

### LANCE LEVIN, PRESIDENT

Lance@LancelotCommercial.com  
DRE#01128388  
Off: 310.839.3333 ext 220  
Fax: 310.839.3382



**LANCELOT**  
Commercial Industrial Brokerage



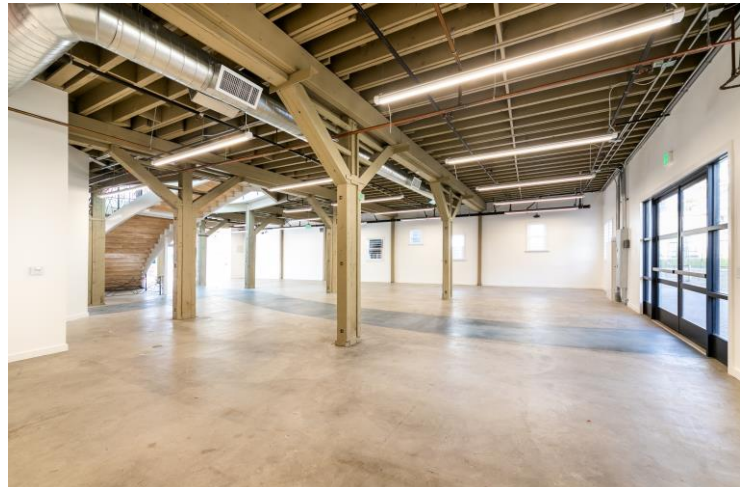
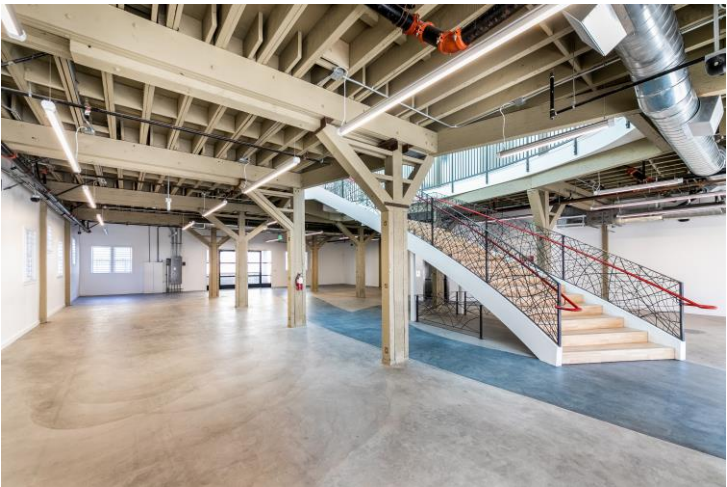
# FOR LEASE

APPROX. 8,000 SF REMOLDED  
RETAIL BUILDING AT THE SANTA MONICA PIER

1605 Ocean Front Walk, Santa Monica, CA 90401



310.839.3333



LANCELOT  
Commercial Industrial Brokerage

1539 SAWTELLE BOULEVARD, SUITE 18 | LOS ANGELES, CA 90025



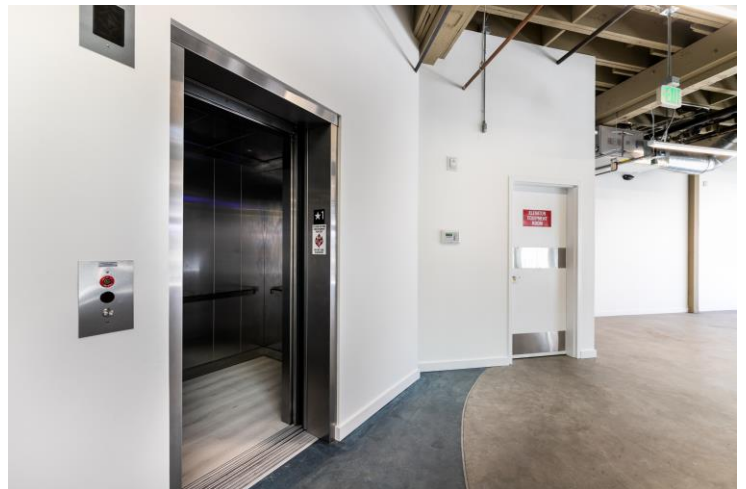
# FOR LEASE

APPROX. 8,000 SF REMOLDED  
RETAIL BUILDING AT THE SANTA MONICA PIER

1605 Ocean Front Walk, Santa Monica, CA 90401



310.839.3333



LANCELOT  
Commercial Industrial Brokerage



# FOR LEASE

APPROX. 8,000 SF REMOLDED  
RETAIL BUILDING AT THE SANTA MONICA PIER

1605 Ocean Front Walk, Santa Monica, CA 90401



310.839.3333



LANCELOT  
Commercial Industrial Brokerage

1539 SAWTELLE BOULEVARD, SUITE 18 | LOS ANGELES, CA 90025



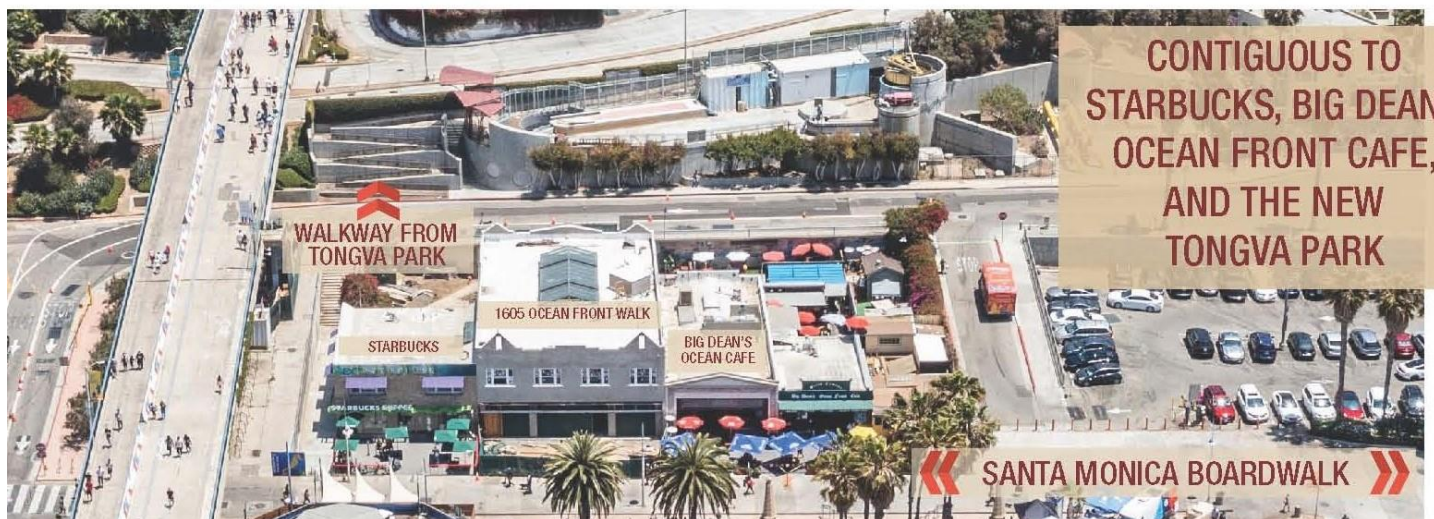
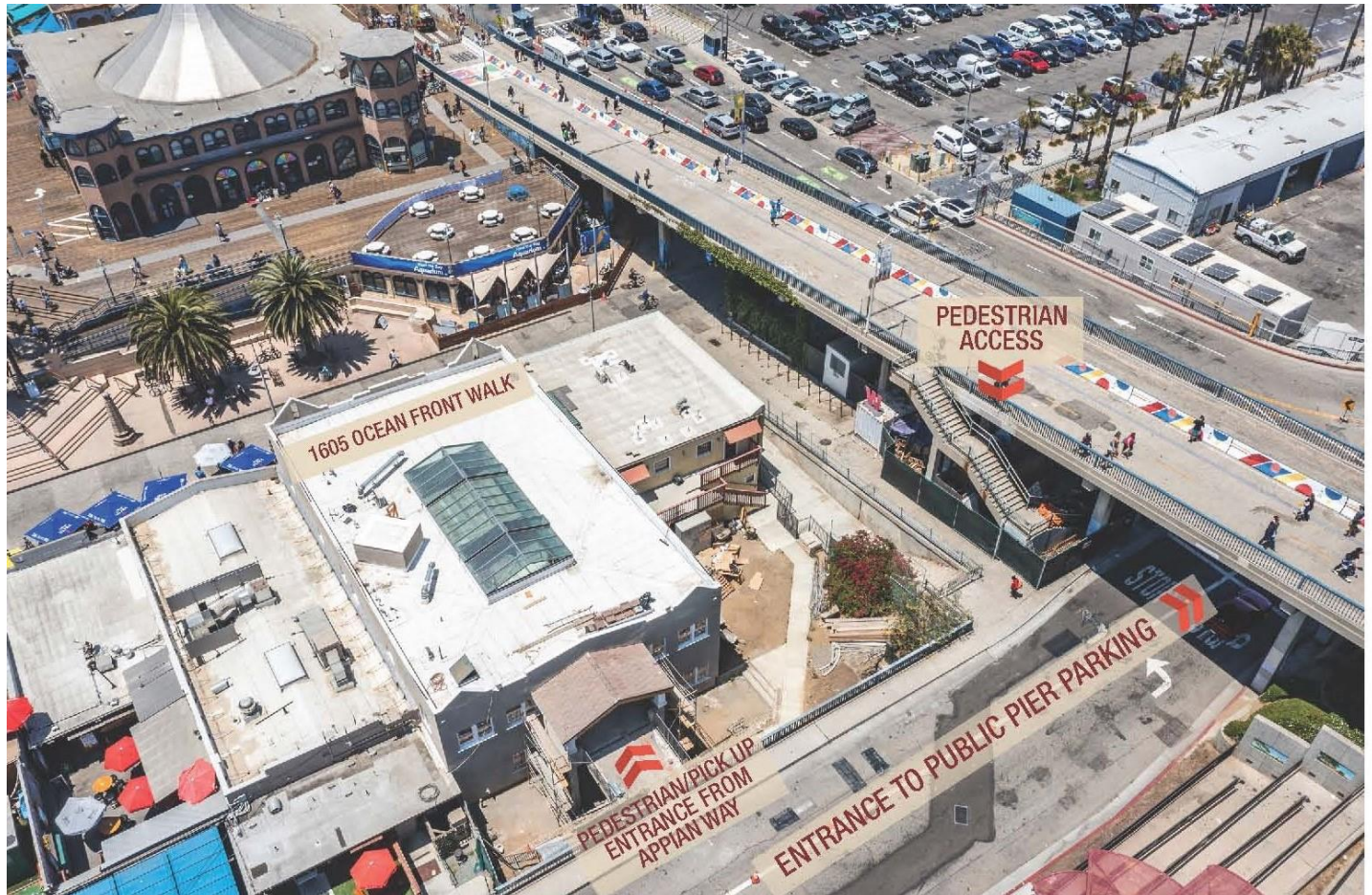
# FOR LEASE

APPROX. 8,000 SF REMOLDED  
RETAIL BUILDING AT THE SANTA MONICA PIER

1605 Ocean Front Walk, Santa Monica, CA 90401



310.839.3333



LANCELOT  
Commercial Industrial Brokerage

1539 SAWTELLE BOULEVARD, SUITE 18 | LOS ANGELES, CA 90025



# FOR LEASE

APPROX. 8,000 SF REMOLDED  
RETAIL BUILDING AT THE SANTA MONICA PIER

1605 Ocean Front Walk, Santa Monica, CA 90401



310.839.3333

ALMOST  
UNLIMITED  
PIER PARKING



LANCELOT  
Commercial Industrial Brokerage



# FOR LEASE

APPROX. 8,000 SF REMOLDED  
RETAIL BUILDING AT THE SANTA MONICA PIER

1605 Ocean Front Walk, Santa Monica, CA 90401



310.839.3333



LANCELOT  
Commercial Industrial Brokerage

1539 SAWTELLE BOULEVARD, SUITE 18 | LOS ANGELES, CA 90025



# FOR LEASE

APPROX. 8,000 SF REMODELED  
RETAIL BUILDING AT THE SANTA MONICA PIER

1605 Ocean Front Walk, Santa Monica, CA 90401



310.839.3333



+/-8 MILLION  
ANNUAL VISITORS

## LOCATION HIGHLIGHTS

- Nearly Unlimited Parking in Adjacent Public Pier Lot
- Close to Aquarium of The Pacific and Pacific Park (Santa Monica Pier Amusement Park)
- Situated Along Bustling Ocean Front Walk, Just Below Ocean Ave, Home famed restaurants and 5-Star Hotels, Including The Lobster, Ivy by the Shore, Lowes, Casa Del Mar + Shutters
- 3 Blocks From the Third Street Promenade, Hosting a Retinue of A+ Retailers, Famed Eateries + Trendy Cafes
- Freeway Close With Convenient Access to the 10 Freeway and Pacific Coast Hwy



LANCELOT  
Commercial Industrial Brokerage