

For Lease

5844 Perry Drive, Culver City, CA 90232

New freestanding building in Culver City Arts District

CONTACT:

Lance Levin, PRESIDENT
lance@lancelotcommercial.com
DRE# 01128388

tel. 310.839.3333
fax. 310.839.3382

OFFICE LOCATION
1539 Sawtelle Blvd. STE 18
Los Angeles, CA 90025



**Natural
Light**

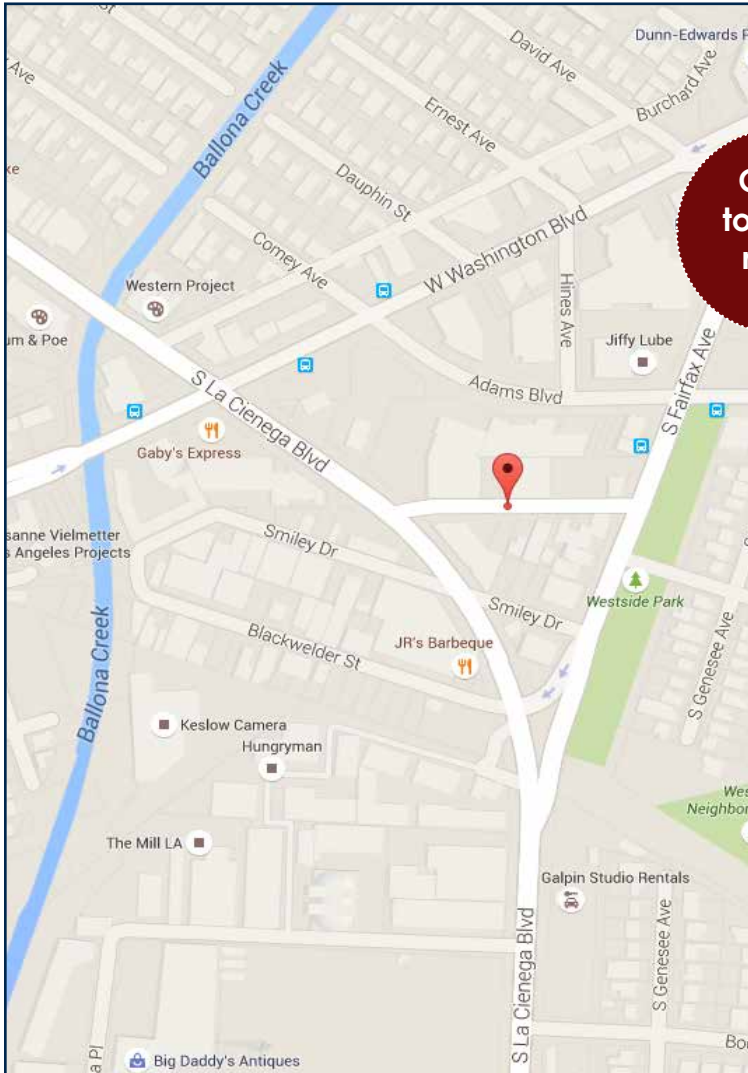


Property Information

Total Available : 3,000 SF
Lot Size : 4,006 SF
Rental Rate : \$46.20 SF/Yr
Min. Divisible : 1,500 SF
Max. Contiguous : 3,000 SF

A new construction, freestanding building perfect for a creative office. This property, located in the Culver City Arts District, features an open floor plan with tremendous natural light.

www.lancelotcommercial.com



Click to view map



Walk to restaurants and metro

FEATURES

- Adjacent to Blackwelder creative complex and gallery row between Washington and Venice
- Close to downtown Culver City
- 10 minute drive to Beverly Hills or LAX
- Two blocks to 10 Freeway on/off ramp at Fairfax or La Cienega.

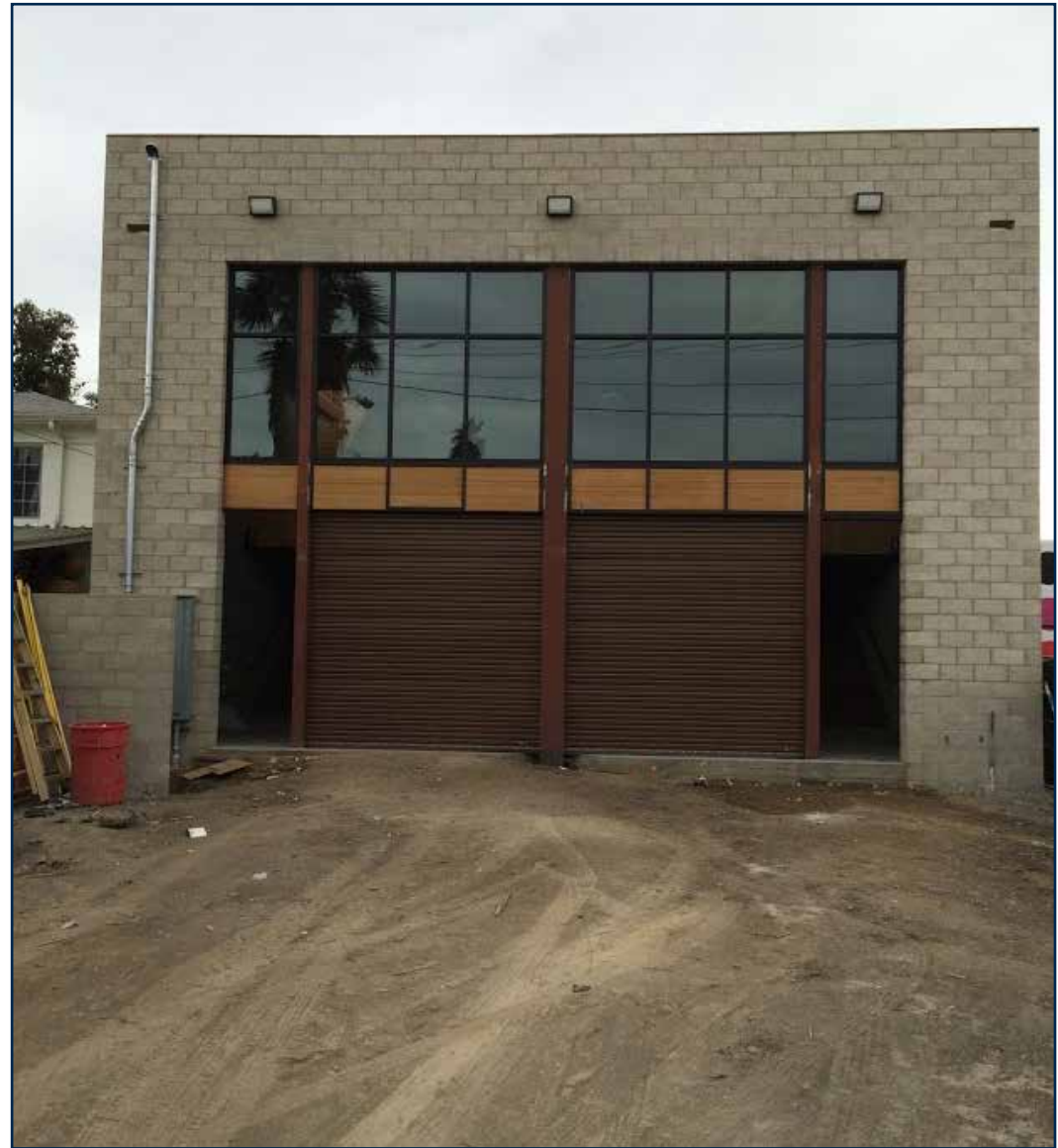
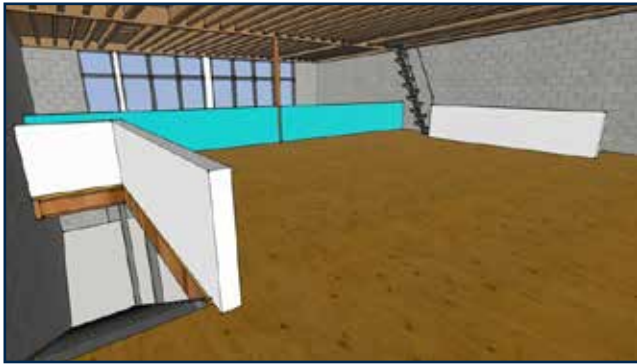
NOTE: All measurements are approximate and while the information furnished comes from reliable sources, we assume no liability.

“Regardless of the professional broker you choose, it is critical to have a broker who is well versed in all aspects of the market in which you are dealing. You will not find a better brokerage company than Lancelot Commercial with this kind of track record.”

- Lance Levin, President

LANCELOT
COMMERCIAL INDUSTRIAL BROKERAGE

5844 Perry Drive, Culver City, CA 90232



"Regardless of the professional broker you choose, it is critical to have a broker who is well versed in all aspects of the market in which you are dealing. You will not find a better brokerage company than Lancelot Commercial with this kind of track record."

- Lance Levin, President

LANCELOT
COMMERCIAL INDUSTRIAL BROKERAGE