

FOR LEASE

SECOND FLOOR OFFICE SPACE AVAILABLE

5700 Hannum Ave., Culver City, CA 90230



310.839.3333
Lancelotcommercial.com



**AVAILABLE
JANUARY 2019**

Lease Price : \$2.50 MG
Total Available : Approx. 3,300 SF
Parking : 10 Car - Free

» FEATURES

- Elevator served 2nd floor space
- 5 window offices, kitchen, conference room and open area
- Tenant pays janitorial

CONTACT:

LANCE LEVIN, PRESIDENT
lance@lancelotcommercial.com
BRE# 01128388
p 310.839.3333 x 220
f 310.839.3382

**SHAUN KRASOWSKI,
EXECUTIVE VICE PRESIDENT**
shaun@lancelotcommercial.com
BRE# 02045557
p 310.839.3333 x 400
f 310.388.6001



LANCELOT

Commercial Industrial Brokerage

1539 Sawtelle Blvd. Suite 18, Los Angeles, CA 90025

FOR LEASE

SECOND FLOOR OFFICE SPACE AVAILABLE

5700 Hannum Ave., Culver City, CA 90230



» LOCATION FEATURES

- Corporate neighbors include Paychex, Symantec, Oracle, Antioch University, Wells Fargo
- Walk to the Westfield Culver City Mall with numerous restaurants including BJ's Brewhouse, Olive Garden, Gold's Gym
- Two blocks to the 90 freeway on/off ramp at Slauson
- Three blocks to the 405 Frwy at Jefferson Blvd on/off ramp

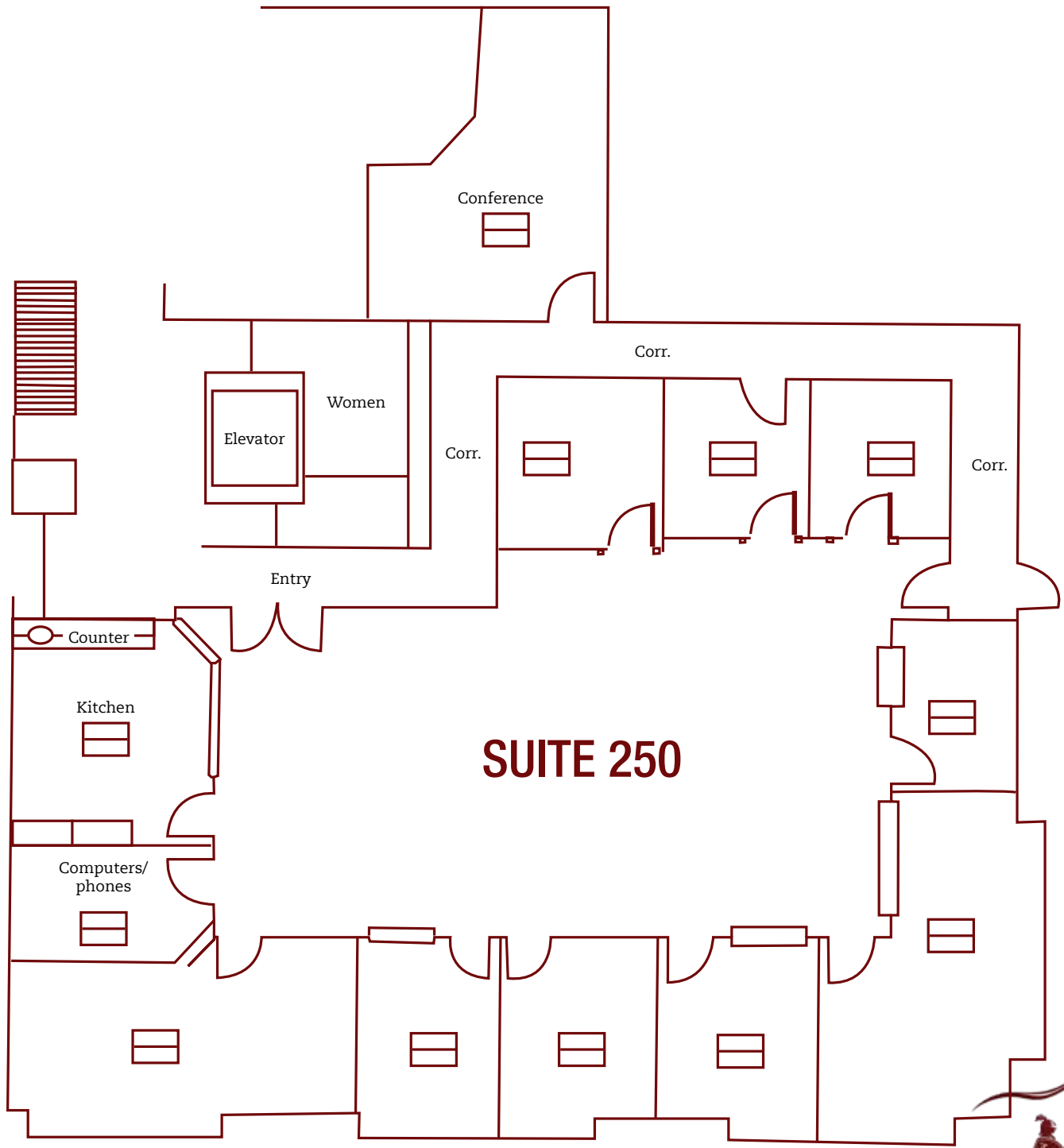


310.839.3333

FOR LEASE

SECOND FLOOR OFFICE SPACE AVAILABLE

5700 Hannum Ave., Culver City, CA 90230



310.839.3333