

FOR SALE

WEST L.A. / CULVER CITY ADJACENT WAREHOUSE

3327 La Cienega Place, Los Angeles, CA 90016



310.839.3333
Lancelotcommercial.com

Building SF : 10,000 SF
Lot Size : 13,711 SF
Sale Price : \$6,995,000



FEATURES:

- 20' minimum clear height poured in concrete tilt up warehouse
- 3,000 +/- SF of updated executive style office with porcelain and tile floors, solid maple doors, skylights and terrific use of glass
- Gated Parking area next to building for 12 spaces
- potential to stack up to 20
- Across the street from a new development of 30,000 SF of retail, 20,000 SF restaurants, 50,000 SF grocery store rumored to include Whole foods, and a 2400 car parking structure
- West of La Cienega Blvd on a private cul-de-sac street
- 1 block to EXPO Metro Train Station at La Cienega/Jefferson
- 1 Metro Stop to Culver City Platform
- 7 blocks to downtown Culver City



CONTACT:

LANCE LEVIN, PRESIDENT
Lance@lancelotcommercial.com
BRE# 01128388
p 310.839.3333 x 220
f 310.839.3382



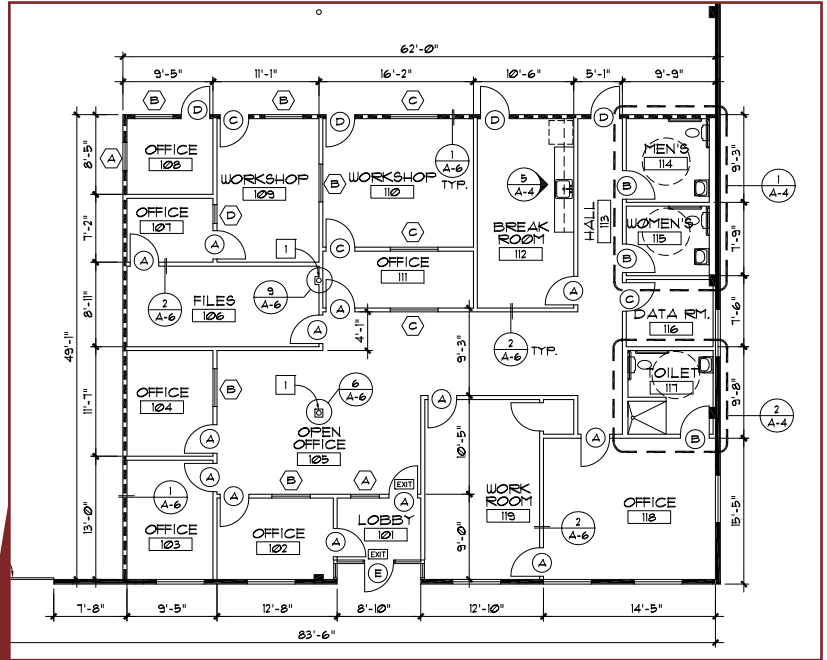
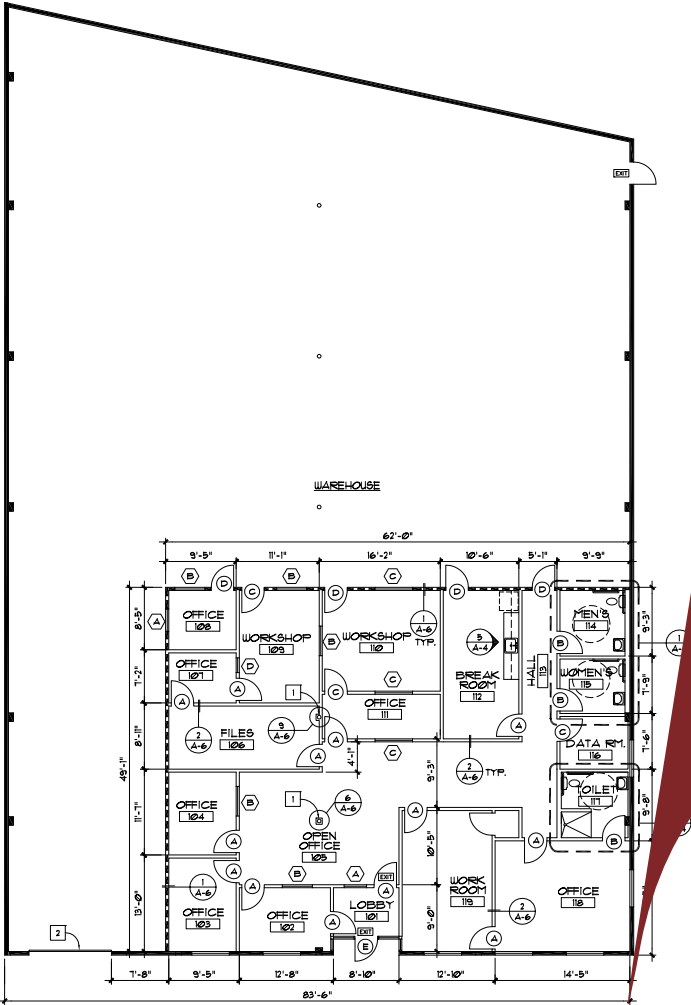
LANCELOT

Commercial Industrial Brokerage

FOR SALE

WEST L.A. / CULVER CITY ADJACENT WAREHOUSE

3327 La Cienega Place, Los Angeles, CA 90016



- Prime location West La Cienega Boulevard on cul-de-sac street
- Extensive skylights in warehouse
- Rear patio overlooking Ballona Creek
- Huge upside with adjacent development
- Building in pristine condition

FLOOR PLAN
SCALE - 1/8" = 1'-0"



310.839.3333
Lancelotcommercial.com