

# For Lease

217 N. Eucalyptus Ave., Inglewood CA, 90301

**Second Floor Space in a Freestanding Building**

## CONTACT:

Lance Levin, PRESIDENT  
[lance@lancelotcommercial.com](mailto:lance@lancelotcommercial.com)  
DRE# 01128388

tel. 310.839.3333  
fax. 310.839.3382

**OFFICE LOCATION**  
8924 LINDBLADE STREET  
CULVER CITY, CA 90232

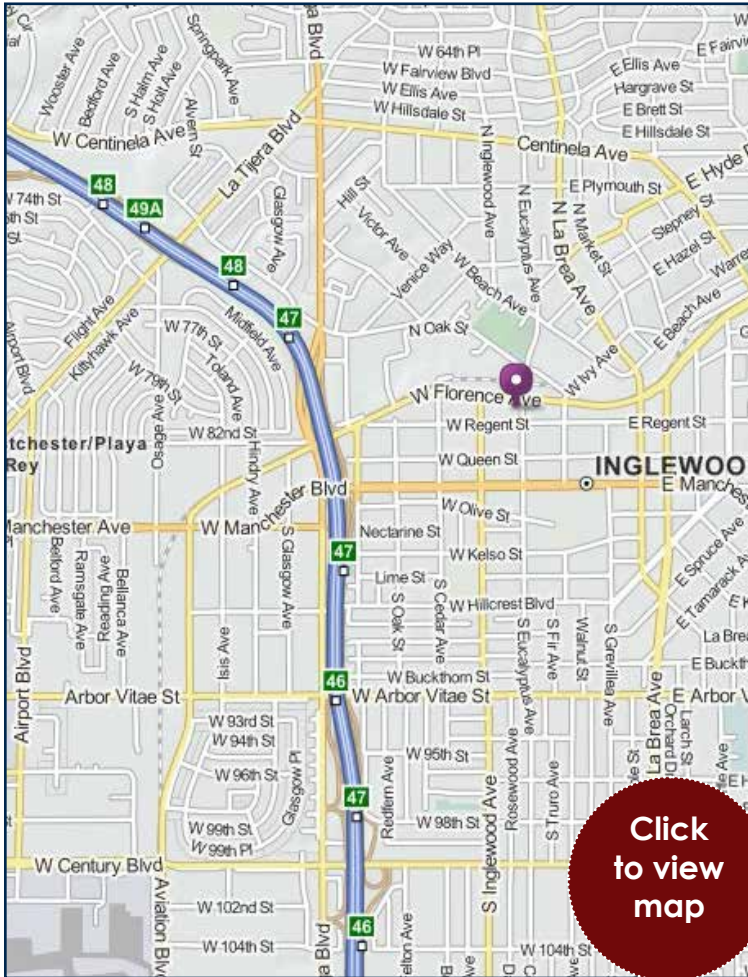


## Property Information

Total Available : 1,000 SF  
Lease Price : \$1,200 Monthly NNN  
Parking : 2 included spaces

[www.lancelotcommercial.com](http://www.lancelotcommercial.com)

# 217 N. Eucalyptus Ave., Inglewood, CA 90301



## FEATURES

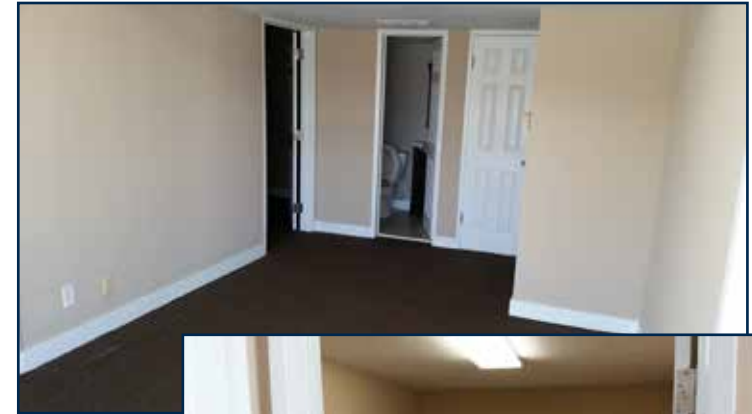
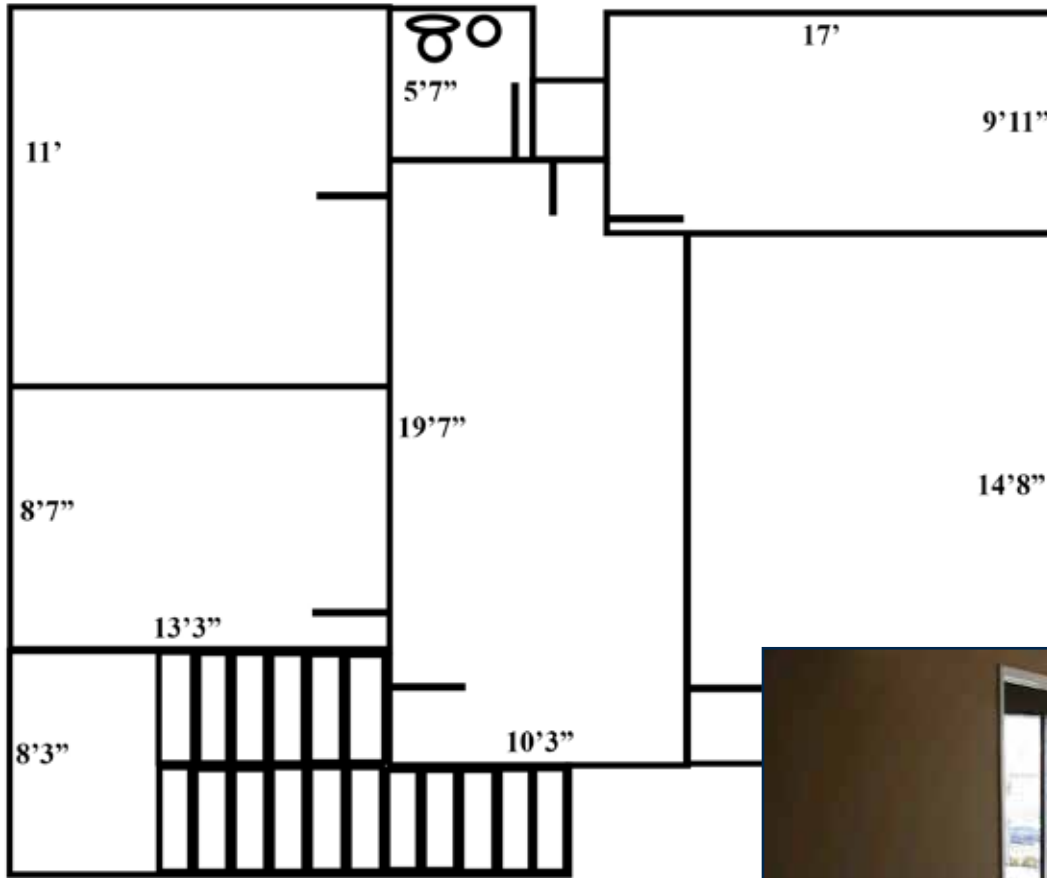
- Second floor insulated and fully air conditioned space
- Two parking spaces included in lease rate
- Seven blocks west to 405 on ramp at Manchester/Florence
- Ten minutes north to west L.A., Culver City or LAX

NOTE: All measurements are approximate and while the information furnished comes from reliable sources, we assume no liability.

*“Regardless of the professional broker you choose, it is critical to have a broker who is well versed in all aspects of the market in which you are dealing. You will not find a better brokerage company than Lancelot Commercial with this kind of track record.”*

*- Lance Levin, President*

**LANCELOT**  
COMMERCIAL INDUSTRIAL BROKERAGE



NOTE: All measurements are approximate and while the information furnished comes from reliable sources, we assume no liability.

*"Regardless of the professional broker you choose, it is critical to have a broker who is well versed in all aspects of the market in which you are dealing. You will not find a better brokerage company than Lancelot Commercial with this kind of track record."* - Lance Levin, President

**LANCELOT**  
COMMERCIAL INDUSTRIAL BROKERAGE