

For Lease

13051 Saticoy St., North Hollywood, CA 91605

Great Manufacturing, Warehouse, or Design Space

CONTACT:

Lance Levin, PRESIDENT
lance@lancelotcommercial.com
DRE# 01128388

tel. 310.839.3333 x 220
fax. 310.839.3382

OFFICE LOCATION

1539 Sawtelle Blvd. Suite 18
Los Angeles, CA 90025



**Generous
Gated
Parking**

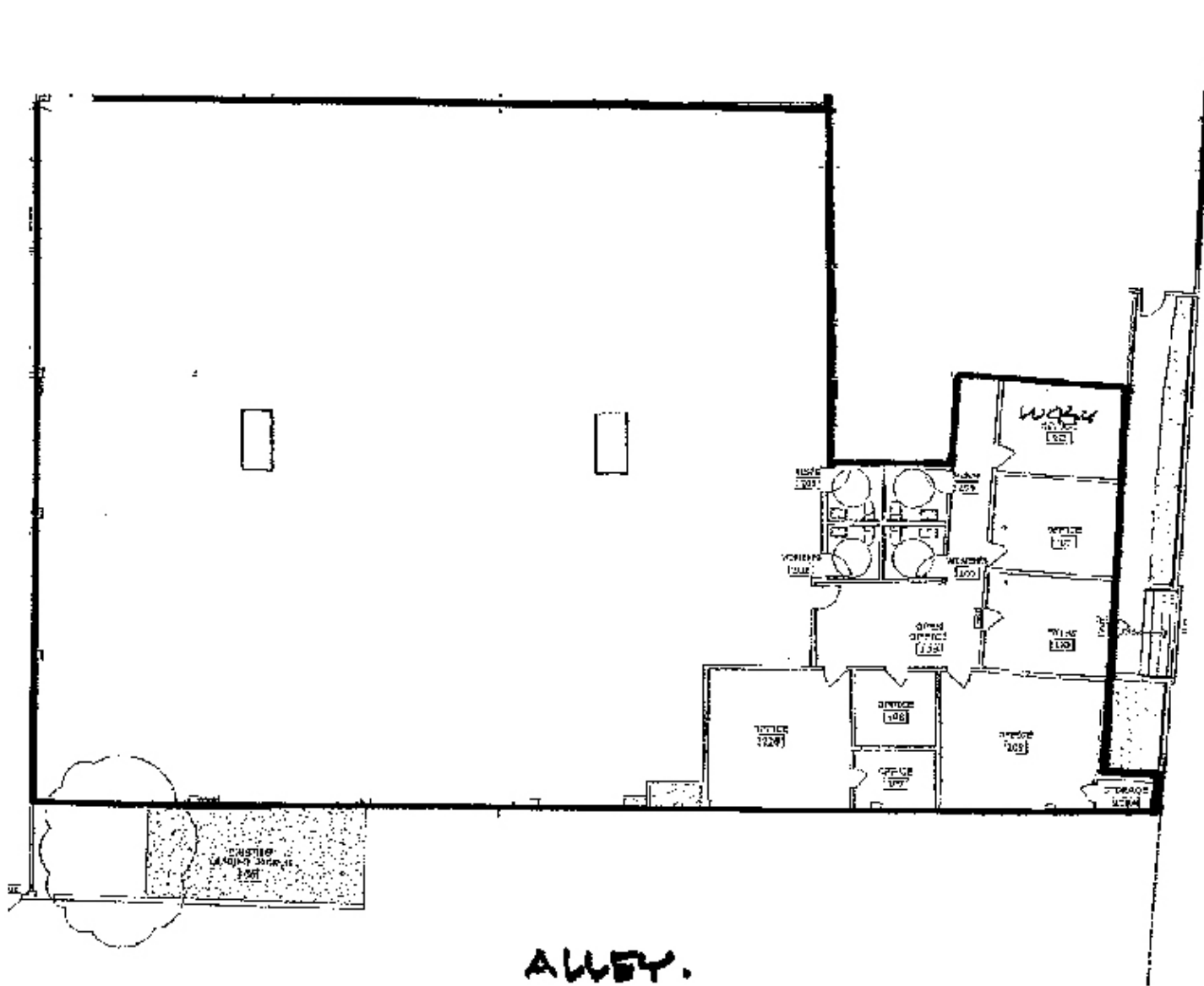
Property Information

Total Available : 11,500 SF
Total Building Size : 42,636 SF
Lease Price : \$.88 SF gross per month
Parking : 18 spaces
No Divisibility :

A high image restored concrete tilt-up with major boulevard visibility and identity. This property was formerly used by Disney.

www.lancelotcommercial.com

13051 Saticoy St., North Hollywood, CA 91605



ALLEY.

"Regardless of the professional broker you choose, it is critical to have a broker who is well versed in all aspects of the market in which you are dealing. You will not find a better brokerage company than Lancelot Commercial with this kind of track record."

- Lance Levin, President

LANCELOT
COMMERCIAL INDUSTRIAL BROKERAGE

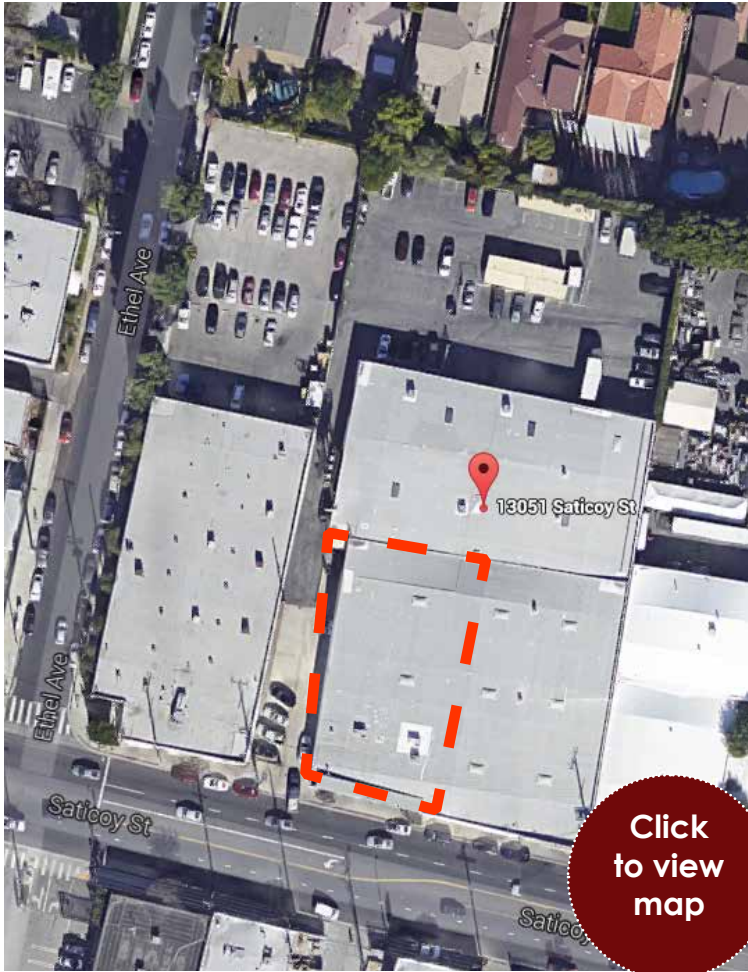
13051 Saticoy St., North Hollywood, CA 91605



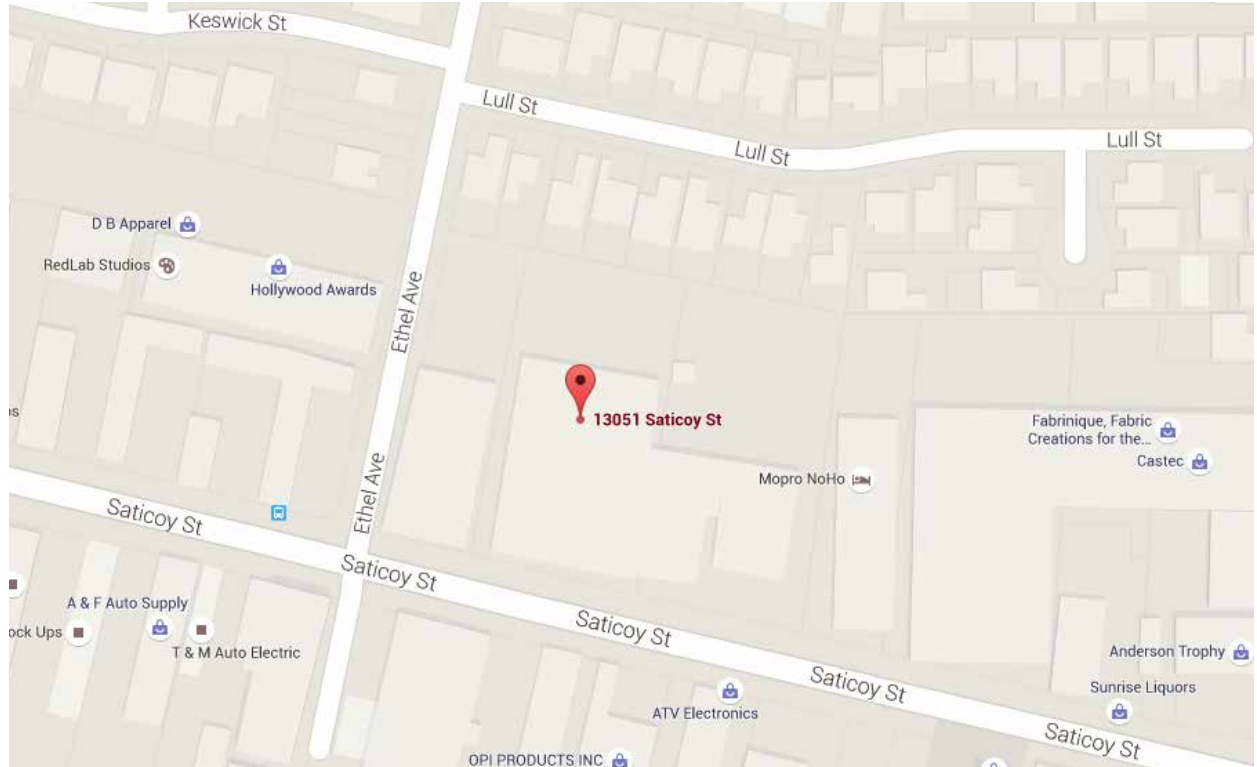
"Regardless of the professional broker you choose, it is critical to have a broker who is well versed in all aspects of the market in which you are dealing. You will not find a better brokerage company than Lancelot Commercial with this kind of track record." - Lance Levin, President

LANCELOT
COMMERCIAL INDUSTRIAL BROKERAGE

13051 Saticoy St., North Hollywood, CA 91605



Click to view map



FEATURES

- 19' warehouse clearance
- Truck high and ground level loading
- Alternate uses: distribution warehouse, office showroom, or manufacturing
- Five blocks to 170 Freeway at Sherman Way
- Major boulevard visibility with building identity available

NOTE: All measurements are approximate and while the information furnished comes from reliable sources, we assume no liability.

"Regardless of the professional broker you choose, it is critical to have a broker who is well versed in all aspects of the market in which you are dealing. You will not find a better brokerage company than Lancelot Commercial with this kind of track record."

- Lance Levin, President

LANCELOT
COMMERCIAL INDUSTRIAL BROKERAGE